



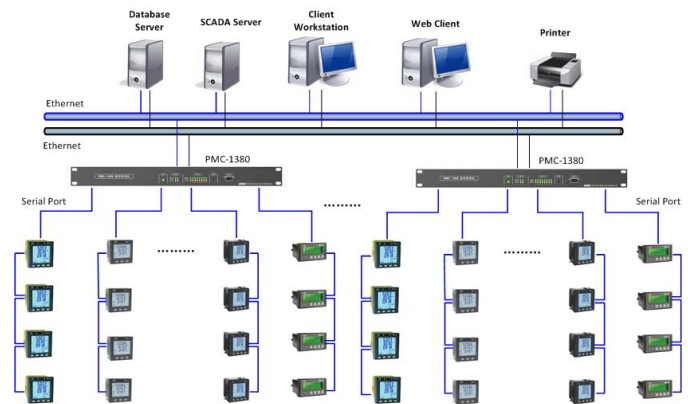
## Overview

The PMC-1380 is the ideal equipment for connecting RS-232 or RS-485 enabled serial devices to an IP-based Ethernet LAN, making it possible to access serial devices over your Ethernet network for control applications. The PMC-1380 has been specifically designed with industrial automation in mind and therefore provides unsurpassed performance and reliability even under the harshest industrial environments. The PMC-1380 comes standard with extended operating temperature range and provides 3kV isolation protection for its RS-485 ports.

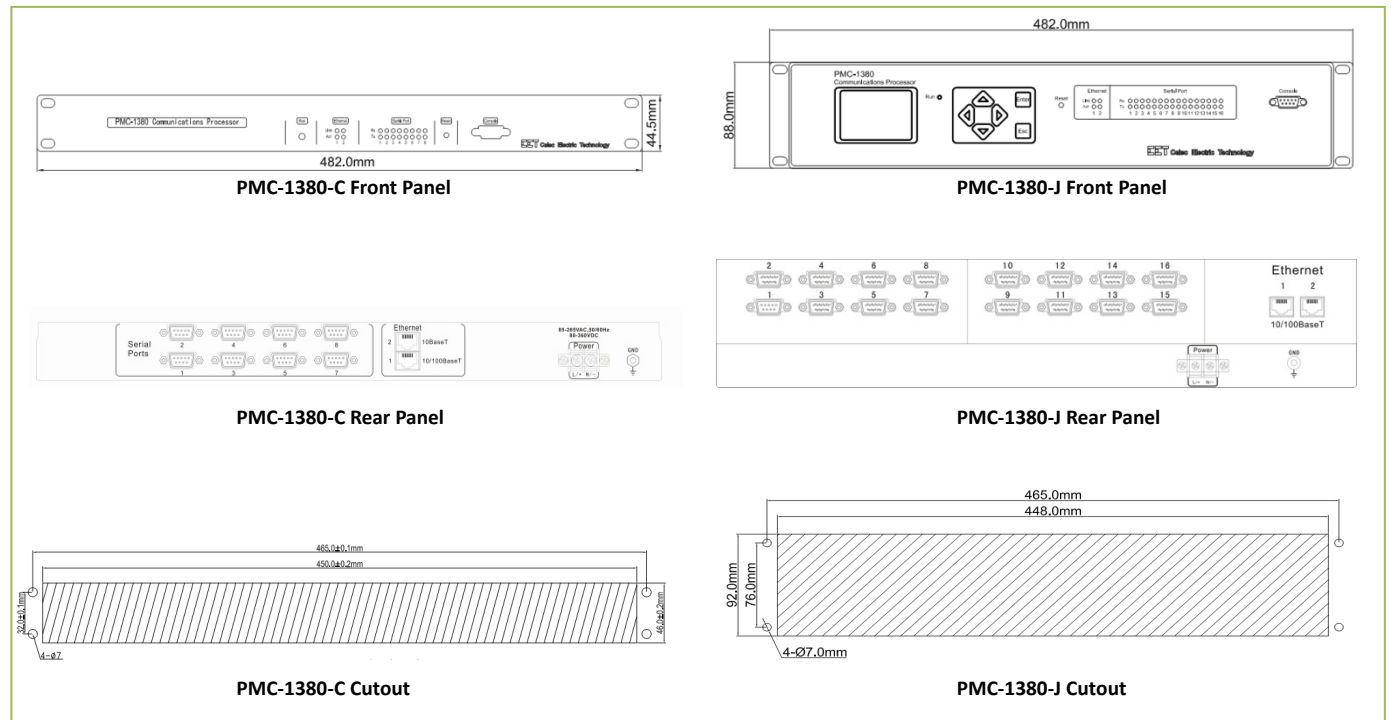
## Features

- Redundant 10/100BaseT Ethernet ports
- Eight or sixteen serial ports supporting different combinations of RS-232 or RS-485 ports
- Automatic Data Direction Control
- Built-in 15 KV ESD protection for all serial signals
- 3kV isolation protection, specifically designed to withstand the harshest industrial environments, for all RS485 Ports 🙌
- Simple port configuration via web interface
- Standard 19-inch rack-mount

## Application



## Device Views and Dimensions



## Technical Specifications

Ethernet Ports (1, 2)	
Number	2
Connector	RJ45
Port 1	10/100BaseT
Port 2	10BaseT
Serial Ports	
Number	8 or 16
Type	RS-232 (DTE) / RS-485
Connector	DB9 Female
Comm. Parameters	
Data bits	5, 6, 7, 8
Stop bits	1, 1.5, 2
Parity	None, Even, Odd
Baudrate	300 to 38,400 bps
Console Port	
Type	RS-232 (DTE)
Connector	DB9 Female
LED Indicators	
Run	Green - System running normally
Ethernet	Link - Green ACT - Yellow
Serial Port	Tx - Yellow Rx - Green
Power Supply (L+, N-, GND)	
Standard	95 to 250VAC/DC ±10%, 50/60Hz
Burden	11W
Protection	
ESD Protection	15 kV for all serial signals
Isolation Protection	3kV for RS-485 ports
Environmental Conditions	
Operating Temp.	-25°C to +70°C
Storage Temp.	-40°C to 85°C
Humidity	5% to 95% non-condensing
Atmospheric pressure	70 kPa to 106 kPa
Mechanical Characteristics	
Housing	Aluminum Alloy
Unit Dimensions	PMC-1380-C: 482×236.5×80mm PMC-1380-J: 482×196.0×44.5mm
Shipping Weight	PMC-1380-C: 3.94kg PMC-1380-J: 7.90kg
Shipping Dimensions	PMC-1380-C: 570×300×145mm PMC-1380-J: 655×365×250mm

Safety Requirements		
Insulation	IEC 60870-3-1989	
Dielectric Test	2kV @ 1 minute	
Insulation Resistance	>100MΩ	
Impulse Voltage	5kV	
Electromagnetic Compatibility		
Electrostatic Discharge	IEC 870-2-1:1995 Level IV	
Radiated Fields	IEC 61000-4-3:1998 Level III	
Fast Transients	IEC 61000-4-4:1998 Level IV	
Surges	IEC 61000-4-5:2005 Level III	
Conducted Disturbances	IEC 61000-4-6:1998 Level III	
Magnetic Fields	IEC 61000-4-8:2001 Class IV	
Mechanical Tests		
Vibration Test	Response	IEC 255-21-1:1988 Level I
	Endurance	IEC 255-21-1:1988 Level I
Shock Test	Response	IEC 255-21-2:1988 Level I
	Endurance	IEC 255-21-2:1988 Level I
Bump Test		IEC 255-21-2:1988 Level I

## Ordering Guide

Product Code		Description
PMC-1380 Communications Processor		
<b>Basic Function</b>		
C		8 ports, 1U, 19-inch rack-mount
J		16 ports, LCD display, 2U, 19-inch rack-mount
<b>Serial Port Selection for Model C (8-Port)</b>		
00-08		0xRS-232, 8xRS-485
<b>Serial Port Selection for Model J (16-Port)</b>		
00-16		0xRS-232, 16xRS-485
04-12		4xRS-232, 12xRS-485
<b>Power Supply</b>		
2		95-250VAC/DC, ± 10%
<b>Display</b>		
E		English Interface
PMC-1380	- J -	00-16 - 2 E
PMC-1380-J-00-16-2E (Example)		

## Contact us

  
**CET SINGAPORE**  
 No.7 MANDAI LINK #05-33  
 MANDAI CONNECTION BLK B SINGAPORE 728653  
 TEL: (65) 6677 7279  
 EMAIL: CONTACT@CETSINGAPORE.COM.SG

[WWW.CETSINGAPORE.COM.SG](http://WWW.CETSINGAPORE.COM.SG)

*Designed For Reliability*

*Manufactured To Last*